

PRODUCT GUIDE

Select

Health Cash Plan

Helping your people lead
healthy, happy lives.



 **Trustpilot**



Rated "Excellent"

Select

Health Cash Plan

The most popular benefits, selected in one straightforward plan.

A Health Cash Plan that provides a healthy foundation for any business. Your employees and their families can claim money back for everyday healthcare costs, alongside access to mental health support, remote GP appointments, counsellors and more.

Helping your people lead healthy, happy lives.

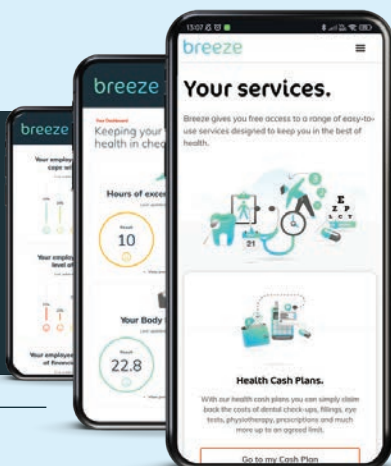


Benefits for the employer:

- ✓ A range of cover levels to match your budget, with the option for employees to upgrade cover
- ✓ An attractive benefit that shows health is at the heart of your workplace
- ✓ A great employee benefit to help attract and retain the best talent
- ✓ Provides employees with easy access and financial support for everyday healthcare
- ✓ Simple onboarding and marketing support to engage your employees

Benefits for your employees:

- ✓ Money back on everyday healthcare costs such as dental, optical and physiotherapy
- ✓ Dependent children covered at no extra cost*, partners can be added for an additional charge
- ✓ Simple and fast online claims, money back typically within 3-5 working days
- ✓ Access to Additional Benefits including virtual GP and a 24/7 counselling and support helpline
- ✓ Exclusive discounts and cashback on shopping via PERKS



Digital access on the go with our mobile app



		LEVEL 1	LEVEL 2	LEVEL 3	LEVEL 4	LEVEL 5
Monthly cost per employee			NEW			
10+ Employees:		£4.77	£6.50	£11.70	£21.67	£34.02
3-9 Employees:		£8.00	£10.49	£18.00	£29.00	£47.00
Children covered at no extra cost.* To add employee partner cover, simply double the individual employee cost per month						
Benefits employees can claim for:		LEVEL 1	LEVEL 2	LEVEL 3	LEVEL 4	LEVEL 5
Dental (including. Check-ups, braces, whitening and more)	Per adult Per child	£65 £30	£90 £45	£120 £60	£175 £85	£230 £115
Optical (including. Prescription glasses, eye tests, contact lenses and more)	Per adult Per child	£65 £30	£90 £45	£120 £60	£175 £85	£230 £115
Combined Physiotherapy (incl. Acupuncture, chiropractic, x-rays, osteopathy, homeopathy and more)	Per adult Per child	£170 £85	£200 £100	£315 £155	£425 £210	£565 £280
Chiropody	Per adult Per child	£65 £30	£90 £45	£120 £60	£175 £85	£230 £115
Health & Wellbeing (incl. allergy testing, counselling, sports massage and more)	Per adult Per child	£85 £40	£100 £50	£140 £70	£195 £95	£250 £125
Health Screening	Per adult Per child	£85 £40	£100 £50	£140 £70	£195 £95	£250 £125
Specialist Consultation and Scanning (incl. CT scans, mammograms, colonoscopy, biopsy and more)	Per adult Per child	£200 £200	£220 £220	£260 £260	£300 £300	£400 £400
Dental accident	Per adult Per child	£180 £90	£300 £150	£400 £200	£600 £300	£800 £400
Personal Accident Protection	Per adult Per child	£5,000 £2,500	£5,000 £2,500	£5,000 £2,500	£5,000 £2,500	£5,000 £2,500
Additional Benefits						
GP Anytime		✓	✓	✓	✓	✓
24/7 Counselling & support helpline		✓	✓	✓	✓	✓
Health Assessments		✓	✓	✓	✓	✓
Perks		✓	✓	✓	✓	✓
SkinVision		✓	✓	✓	✓	✓
My Gym Discounts		✓	✓	✓	✓	✓

The tables shows the yearly maximum that can be claimed per employee

Optional Bolt-ons

Face to Face Counselling
Up to 8 face to face counselling sessions.

PMI Excess Cover
Where selected this will be paid from and up to "Specialist Consultation and Scanning" limits.

Speak to our team for full details of optional bolt-ons, including costs and how to include them on your cash plan.

Employees have access to their benefits in the palm of their hand with our Breeze app.

Breeze users can make virtual GP appointments, submit claims, speak to mental health counsellors, manage their cash plan and much more, all on the go.



*Up to the age of 21, living at home and in full-time education

Why Health Shield?



Digital simplicity

Supporting your employees with their wellbeing is important and we want to make it as simple as possible to get them started.

5 Simple Steps to Better Health & Wellbeing

- 1 Sign up for your chosen plan
- 2 Upload employee detail to the online portal
- 3 We invite your employees to register
- 4 Employee completes online registration and can download app
- 5 Instant access to benefits

This is a financial promotion.

Health Shield Friendly Society Limited is authorised by the Prudential Regulation Authority and regulated by the Financial Conduct Authority and the Prudential Regulation Authority.

